



# هنا و سرور

ARTIST PORTFOLIO



Aug. 29  
5:00 @  
Baht



HANA.

HANA W SOROR.

BORN, RAISED, AND CONSUMED BY CAIRO.

CHEMICALLY CONNECTED TO STRETCHING THE BOUNDS OF COLORS,

TEXTURES AND ALL THAT CAN BE REPURPOSED.

HANA W SOROR IS AN EXPERIMENTAL AND CONCEPTUAL ARTIST  
DRIVEN BY THE FLUIDITY, COMPLEXITY, AND INTERCONNECTIVITY  
OF BEING HUMAN.

THE COLLECTIVE EXPERIENCE OF BEING A HUMAN IS GUIDED BY  
AN EVERLASTING SENSE OF YEARNING. THE HUMAN IS IN A  
CONSTANT STATE OF SEEKING THE EMOTIONAL AND PHYSICAL  
CONNECTIONS THAT ALLOW US TO BE SEEN AND EXPERIENCED.

IT IS A VISUAL REPRESENTATION OF THE CONTRAST BETWEEN THE  
SOFTNESS OF WHAT WE SEEK AND THE HARSHNESS OF WHAT WE  
RECEIVE. NAVIGATING ALL THAT IS SOFT, HARSH, AND CHEMICAL  
HAS CULTIVATED THE EXISTENCE OF 30SHAQALMADINA AS AN  
EXPERIMENTAL EXPLORATION OF THE CITY, THE SELF, AND ALL  
THAT HAS BEEN CHEMICALLY CONNECTED.

THE HANAWSOROR WEBSITE



عشاق المدينة

القاهرة ٢٠٢٥

30SHAQ ALMADINA

ALQAHERA 2025





## THE THREE CHEMICAL CONNECTIONS

## الارتباطات الكيميائية الثلاثة

BETWEEN THE PAGES OF MY JOURNAL IS EVIDENCE\* OF ALL THE TIMES I LEFT THE MESSY WRITING AND USED COLORS TO CONTINUE EXPRESSING ALL THAT I CARRY. THIS LITTLE DANCE BETWEEN MY FINGERS, MY BRUSH, AND MY SKETCHBOOK IS THE FIRST CHEMICAL CONNECTION OF MANY.

THE HUNGER MY EYES FEEL WHEN I WALK AROUND\*\* LOOKING AT ALL IT COULD PERCEIVE, HOLD, AND FEEL IS THE SECOND CHEMICAL CONNECTION.

FALLING VICTIM TO THE GREATEST CONNECTION OF THEM ALL, WANDERING THE STREETS OF THE CITY WITH A LOVE SO STRONG IT DISMANTLES ANY OTHER 3OSHAQ IN THIS MADINA IS THIRD.

\*SEE SOUQ ALSOROUR BELLOW

\*\*PLACES I WALK AROUND: MY BEING, MY PEOPLE, MY WORLDS, ETC.

30SHAQ ALMADINA IS AN EXPERIMENTAL COLLECTION THAT PLAYS SPECTATOR TO ALL THREE CONNECTIONS AS THEY OVERLAP, AMPLIFY, AND DISRUPT ONE ANOTHER. IT IS THE PRODUCT OF EVERY TIME WE WERE ALLOWED TO BE AND SEE ONE ANOTHER IN OUR RAWEST HUMAN FORM. IT IS A COLLECTION OF SAMPLES OF ALL THE PLACES WE HAVE BEEN TO AND ALL THAT HAS TOUCHED OUR RAWEST FORM.

THE PROCESS OF THIS CREATION COINCIDES WITH MY PERCEPTION OF THE HUMAN EXPERIENCE. STARING OFF VERY SIMPLY WITH A TOOL OF MY CHOICE, A COLOR, AND ANY FORM OF FLAT SURFACE. IT IS A CONTINUOUS PROCESS OF TEASING YOUR SUBJECT MATTER IN A WAY THAT DISRUPTS THE INITIAL LANDSCAPE AND FORCES YOU TO REARRANGE WHAT IS INITIALLY SEEN TO CREATE A NEWER VISION. ALMOST HALF OF THIS COLLECTION IS PRODUCED ON PREVIOUSLY EXISTING ARTWORK. CANVASES AND WOODEN SCRAPS THAT HAVE BEEN STORED FOR STRETCHES OF TIME GET TO RECONNECT WITH PAINT, DENIM, CEMENT, GLITTER; ANYTHING THAT WOULD STAIN.

THIS EXERCISE OF LOOKING AND SEEKING NEW SURFACES AND NEW TOOLS IS A REPEATED PATTERN THAT EXISTS ACROSS ALL THAT I HAVE CHEMICALLY INDULGED IN. INDULGENCE THAT LET'S YOU SEE ALL WAYS THIS SUBJECT HAS BEEN TOUCHED AND STAINED, YET YOU EXPERIENCE IT TO BE NEW AND CHEMICAL. SIMILARLY, ALL OF THOSE PIECES CARRY THE IMPACTS OF THEIR INDIVIDUAL CONNECTIONS AND ARE PRESENTED TO YOU AS NEW SUBJECTS READY TO BE INDULGED.



PE PEW

ACRYLIC ON CANVAS

20x20cm



## MARRY ME

ACRYLIC + GLITTER ON CANVAS

30x25cm





A4ALI

ACRYLIC ON CANVAS

35X28CM



## ALBA7TH - البحث

MIXED

ACRYLIC + GLITTER PASTE + WOOD

60x30cm





# ALWOSOUL - الوصول

ACRYLIC ON CANVAS

50x30cm



# UNVEIL

(SOUL SISTERS)\*

ACRYLIC + CEMENT ON CANVAS

50x40cm





3AYMA - عايمة

ACRYLIC ON CANVAS

60X50CM



نفس غير مطمئنة

NAFS GHEIR MOTMA2ENA

ACRYLIC ON CANVAS

60x40cm



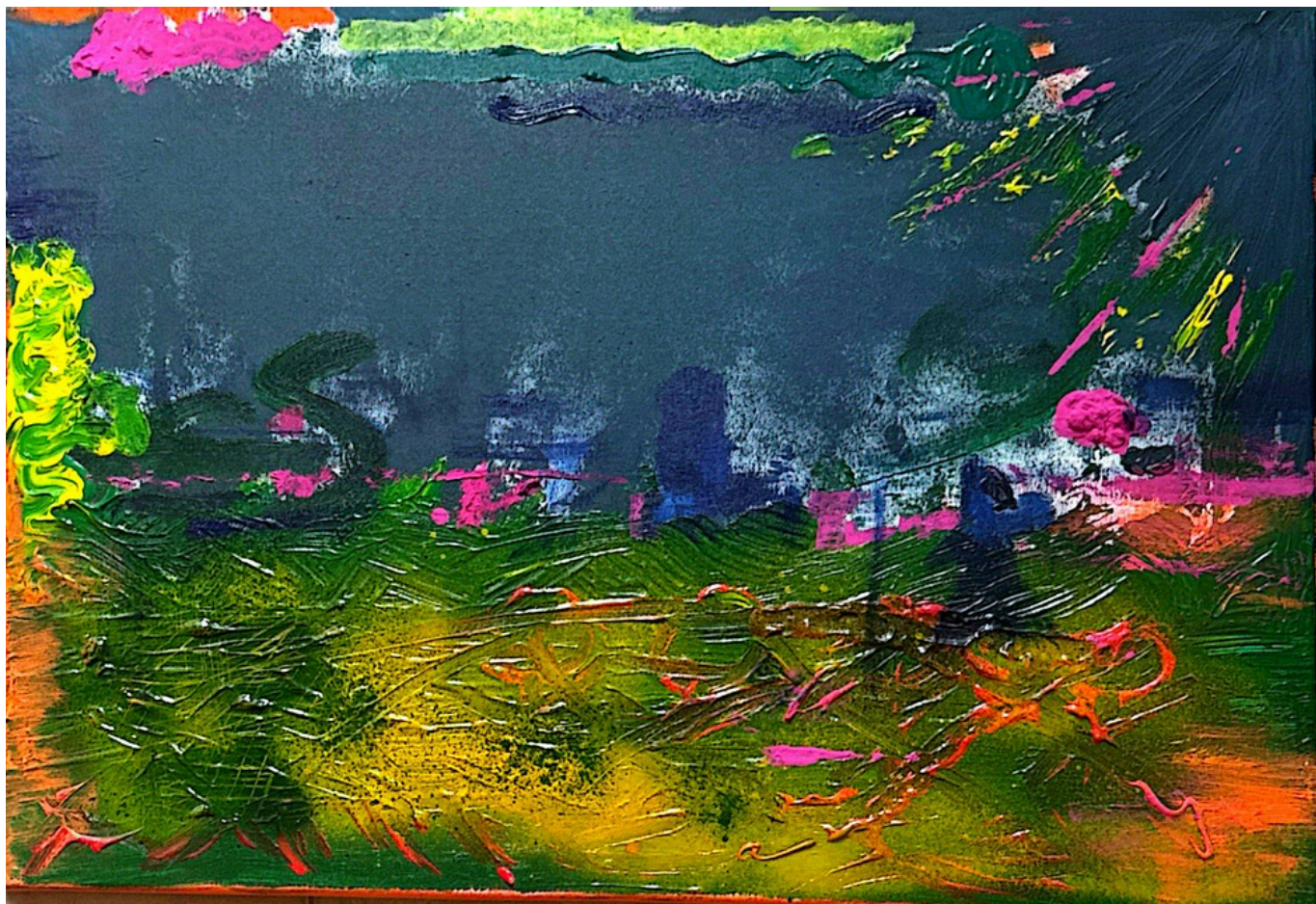


## 3ATALA - عطلة

ACRYLIC ON CANVAS

50x50cm





SADAQAT - صدقات

ACRYLIC + SPRAY PAINT ON CANVAS

60X50CM





# UNRAVEL

(SOUL SISTERS)\*

DENIM + THREAD ON WOOD FRAME

50x40cm





طلبات صعبة كثير - TALABAT SA3BA KETIR

MIXED ON WOODEN BOARD

62X83CM





سب وقذف - SAB W KAZF

CRYLIC + SPRAY PAINT ON CANVAS

90X60CM



## MARBELLA CITY

ACRYLIC + SILVER SHEET ON WOODEN BOARD

43x133cm